

Spare Parts Listings + Disassembly Diagrams

B6200 / B6300

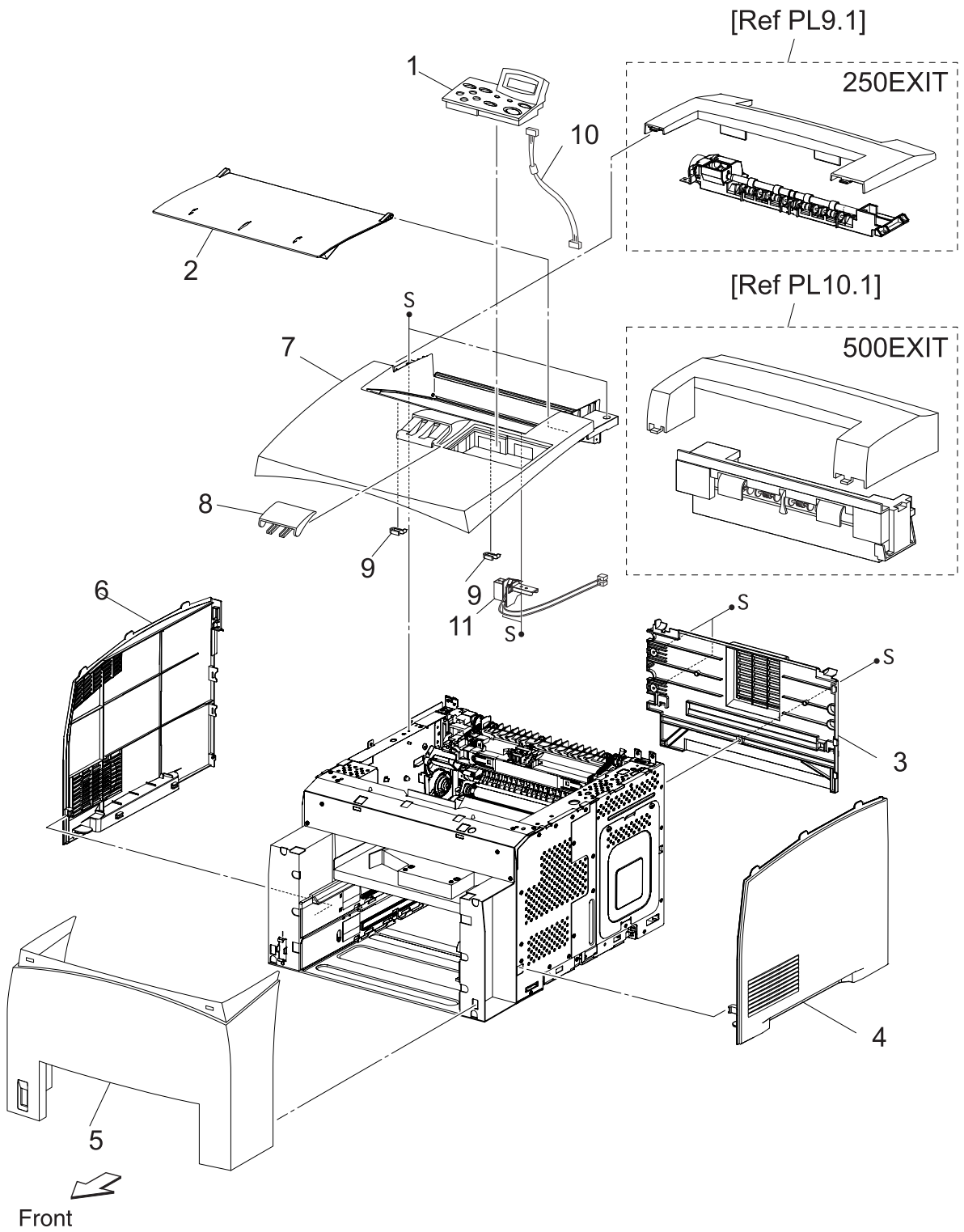


Revision 1

PL1.1 Cover

Number	Part Number	Name
1	802K55689	OPERATION PANEL, [B62/63]
2	802E60864	Cover Open ODC, B62/B63
3	604K16491	COVER REAR 34PPM, [B62/63]
5	802E60843	Cover Front, B6200
6	802E60882	Cover Left ODC, B62/B63
7	802E60854	Cover Top ODC, B62/B63
10	962K30480	HARNESS ASSY PANEL, [B62/63]
11	110K11894	SWITCH I/L ASSY (J144,J411), [B62/63]

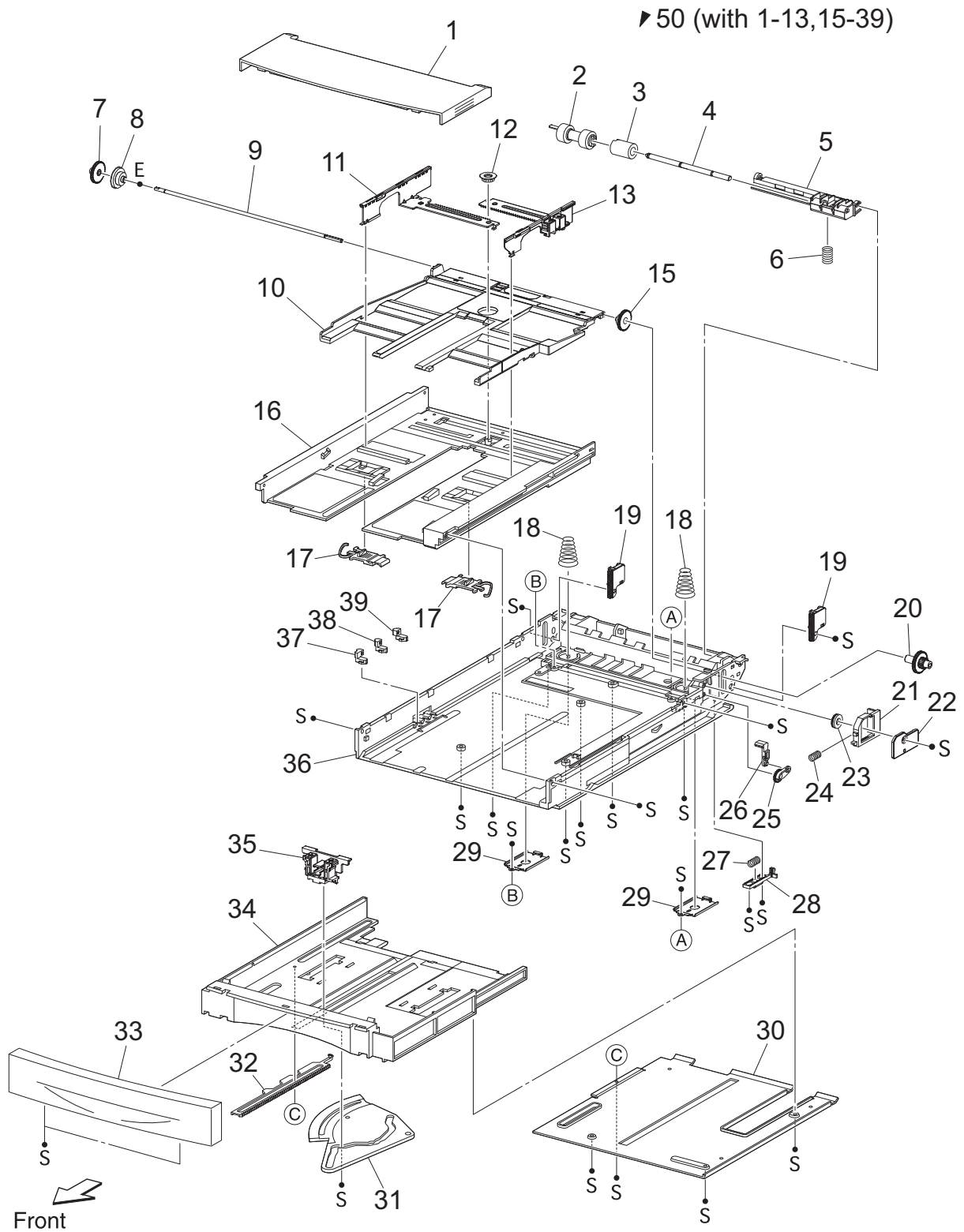
PL1.1 Cover [Illustration]



PL2.1 150 Paper Cassette

Number	Part Number	Name
6	809E37500	Spring Retard, B62/63
50	084K15374	150 Paper Cassette, B62/B63

PL2.1 150 Paper Cassette [Illustration]

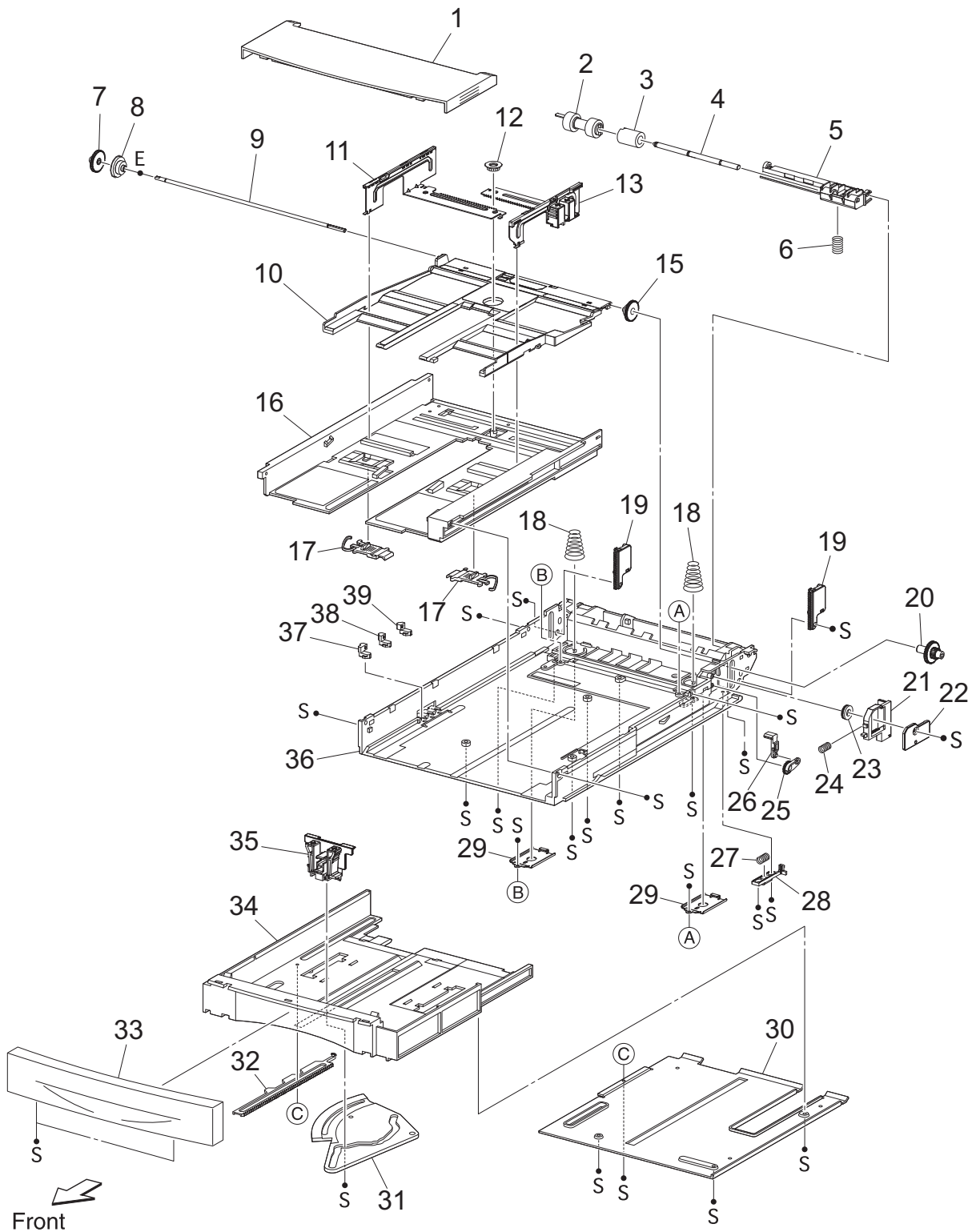


PL3.1 250 Paper Cassette

Number	Part Number	Name
50	084K15394	250 Paper Cassette, B6200

PL3.1 250 Paper Cassette [Illustration]

▼ 50 (with 1-13,15-39,41,42)

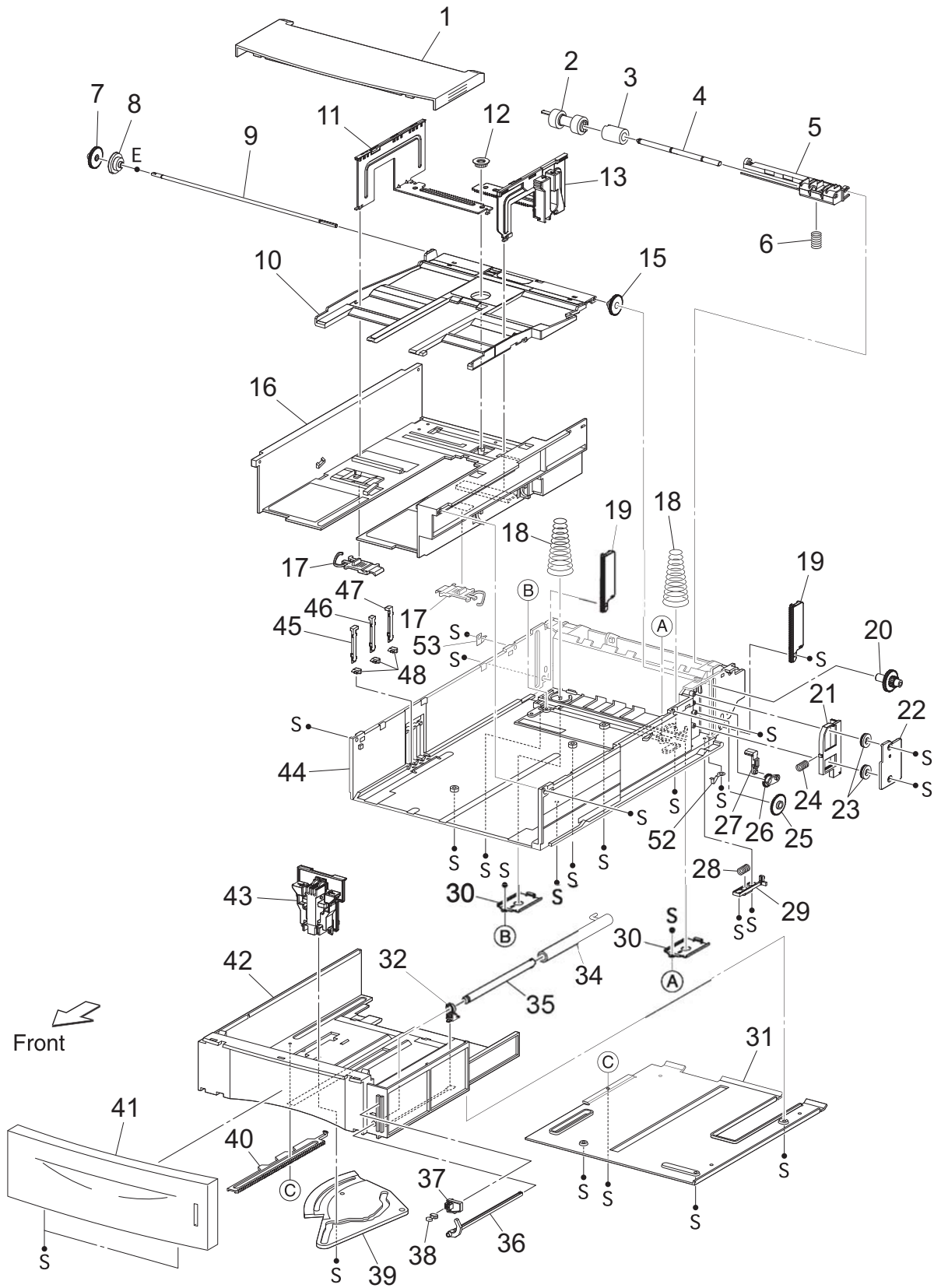


PL4.1 550 Paper Cassette

Number	Part Number	Name
50	084K15436	550 PAPER CASSETTE, [B62/63]

PL4.1 550 Paper Cassette [Illustration]

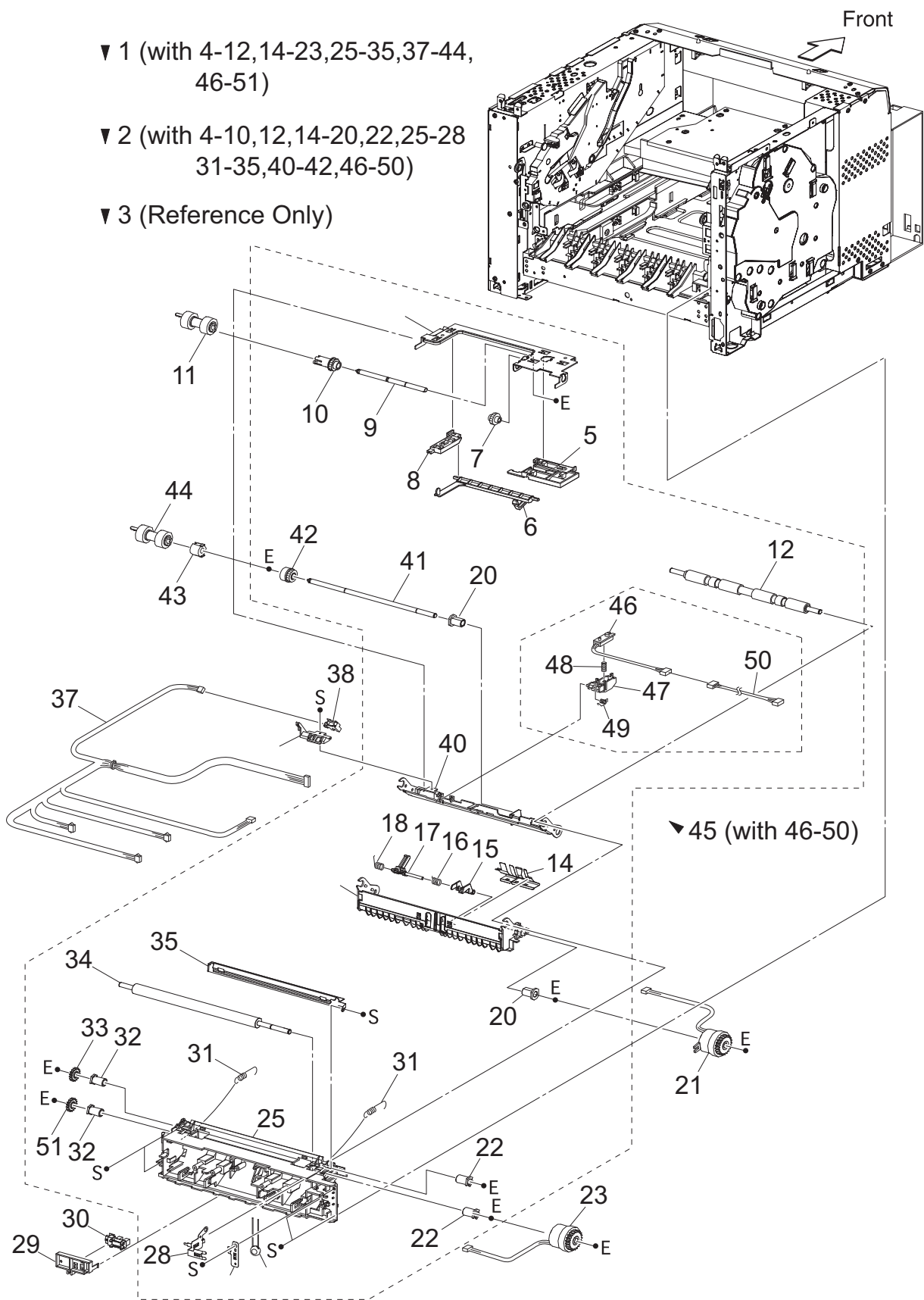
▼ 50 (with 1-13,15-32,34-48,52,53)



PL5.1 150 Paper Feeder

Number	Part Number	Name
1	604K16684	150 FEED ASSY (with2-49), [B62/63]
6	120E21622	ACTUATOR NO PAPER, [B62/63]
7	007E74881	GEAR IDLER NUDGER, [B62/63]
10	059K25270	GEAR NUDGER, [B62/63]
12	059E97833	ROLL REGI RUBBER, [B62/63]
15	120E21296	ACTUATOR A, [B62/63]
16	809E55660	SPRING REGI SNR B, [B62/63]
17	120E21305	ACTUATOR B, [B62/63]
18	809E55650	SPRING REGI SNR A, [B62/63]
21	121K28511	CLUTCH ASSY PH (J242), [B62/63]
30	130K63603	SENSOR TONER ASSY (with46-49),
31	809E41093	SPRING REGI, [B62/63]
33	807E01290	GEAR REGI BUBBER (BLACK), [B62/63]
42	005E16951	CLUTCH ONEWAY NUDGER, [B62/63]
43	005E16941	CLUTCH ONEWAY FEED, [B62/63]

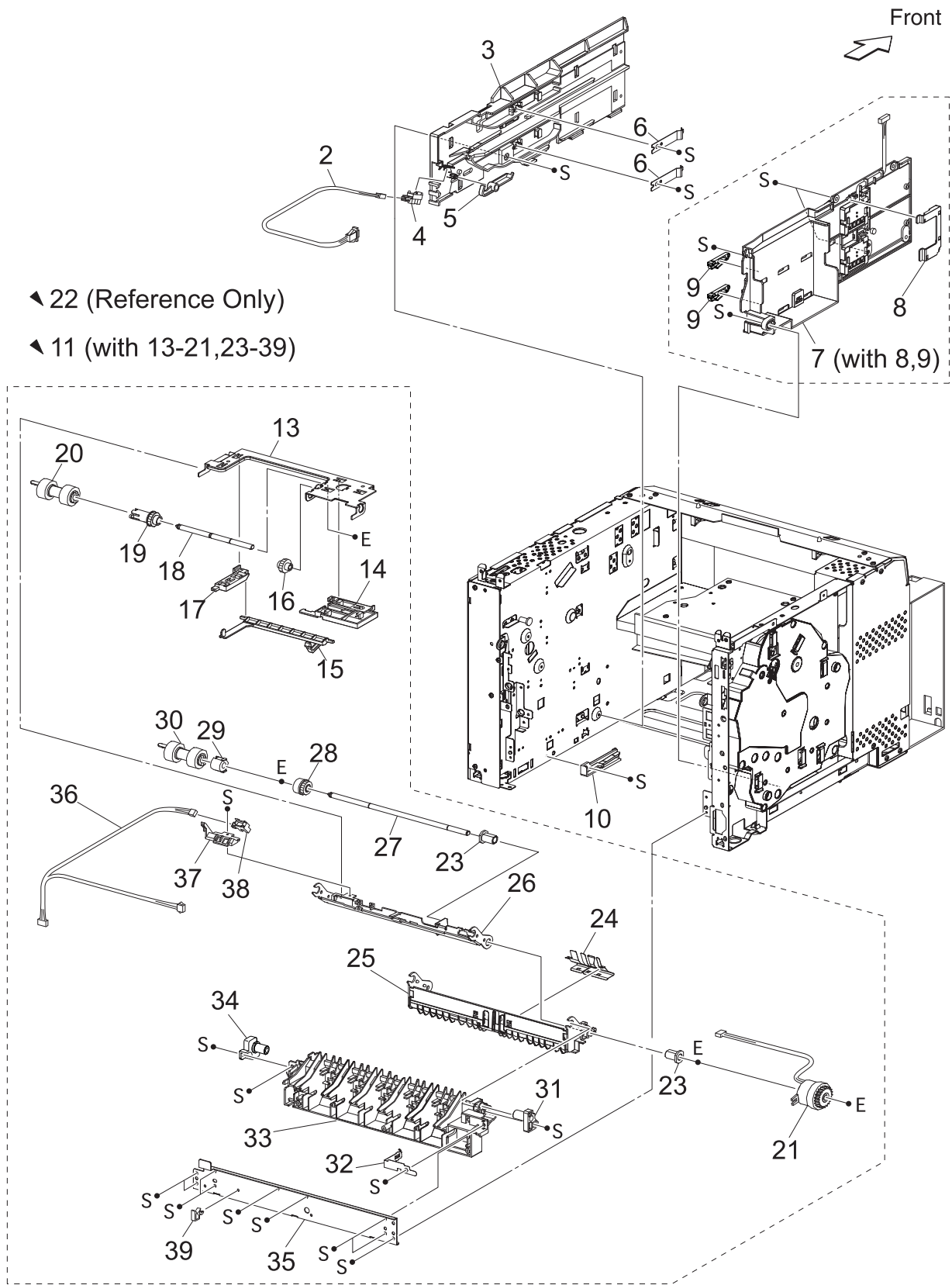
PL5.1 150 Paper Feeder [Illustration]



PL6.1 250 Paper Feeder

Number	Part Number	Name
3	032K97012	Guide Assy Right, B6300
5	120E21311	ACTUATOR, [B62/63]
7	032K96838	Guide Tray Left, B6200/6300
9	003E59231	LOCK CST L, [B62/63]
11	022K66966	250 FEED ASSY (with12-39), [B62/63]

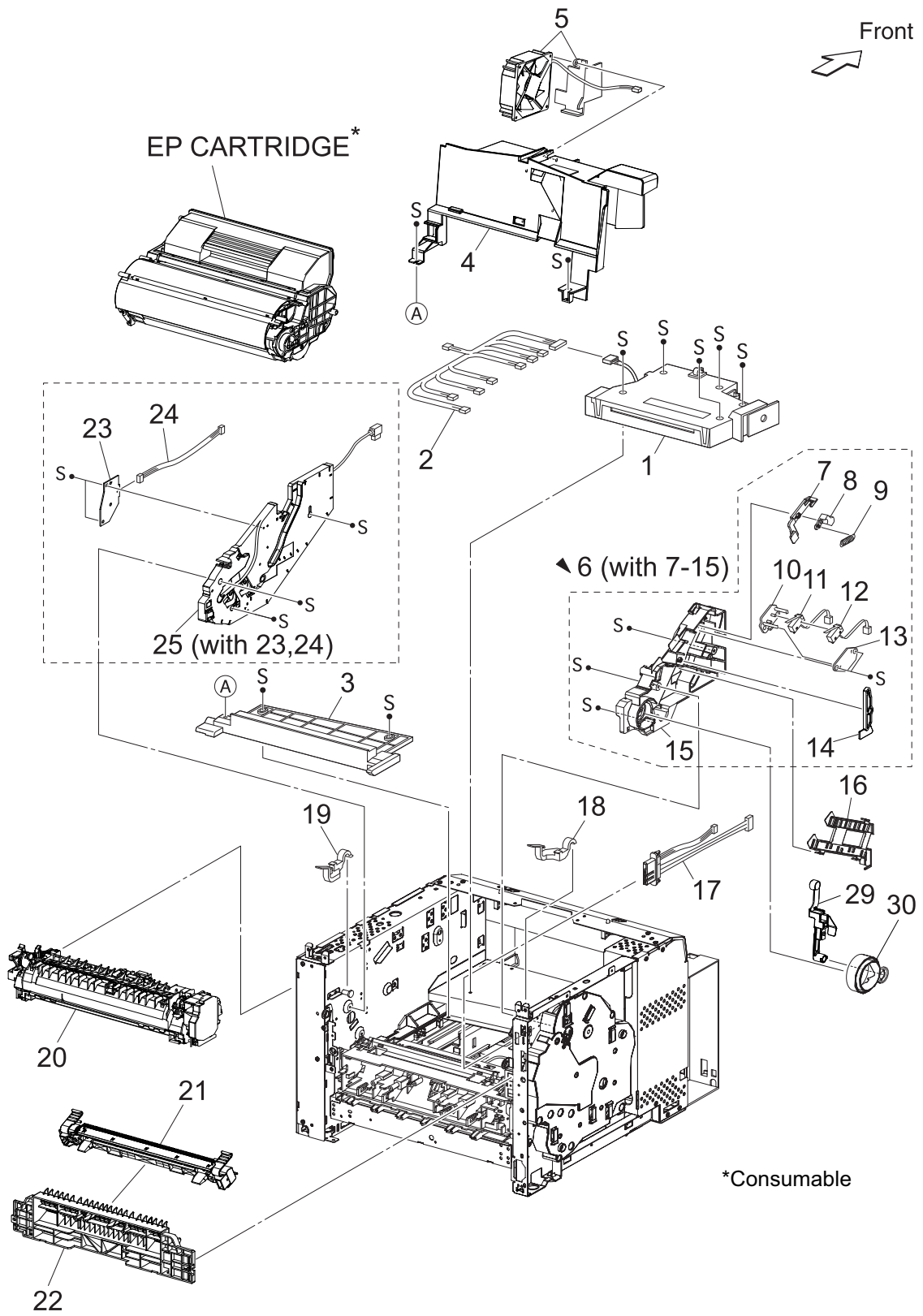
PL6.1 250 Paper Feeder [Illustration]



PL8.1 Xero

Number	Part Number	Name
1	084K13134	ROS ASSY 24PPM , [B6200]
1	084K13156	ROS ASSY 34PPM , [63]
2	962K13791	HARNESS ASSY ROS 24PPM , [B62/63]
2	962K13841	HARNESS ASSY ROS 34PPM, [B62/63]
5	127K39391	FAN SUB (J270), [B62/63]
7	032E18394	GUIDE ASSY SL, B6200/6300
11	962K09923	INTERLOCK S/W 24V (J45), [B62/
12	962K22540	INTERLOCK S/W 5V, [B62/63]
17	962K12942	HARNESS ASSY FUSER 220V, [B62
18	011E12904	LEVER FUSER LH 24PPM, [B62/63]
18	011E13362	LEVER FUSER LH 34PPM, [B62/63]
19	011E12915	LEVER FUSER RH 24PPM, [B62/63]
19	011E13373	LEVER FUSER RH 34PPM, [B62/63]
20	604K28543	FUSER ASSY 34PPM (with26-28), [6300]
20	604K28563	FUSER ASSY 24PPM (with26-28), [B6200]
21	802K49747	BTR ASSY, [B62/63]
22	054K26060	CHUTE TRANSFER 24PPM, [B62/63]
22	054K26071	CHUTE TRANSFER 34PPM, [B62/63]
23	160K91084	PWBA ASSY ANT (P150), [B62/63]
24	962K12933	HARNESS ASSY ANT (J15-J150), [
29	012K94352	LEVER LINK, [B62/63]
30	012E10561	LINK GEAR 3, [B62/63]

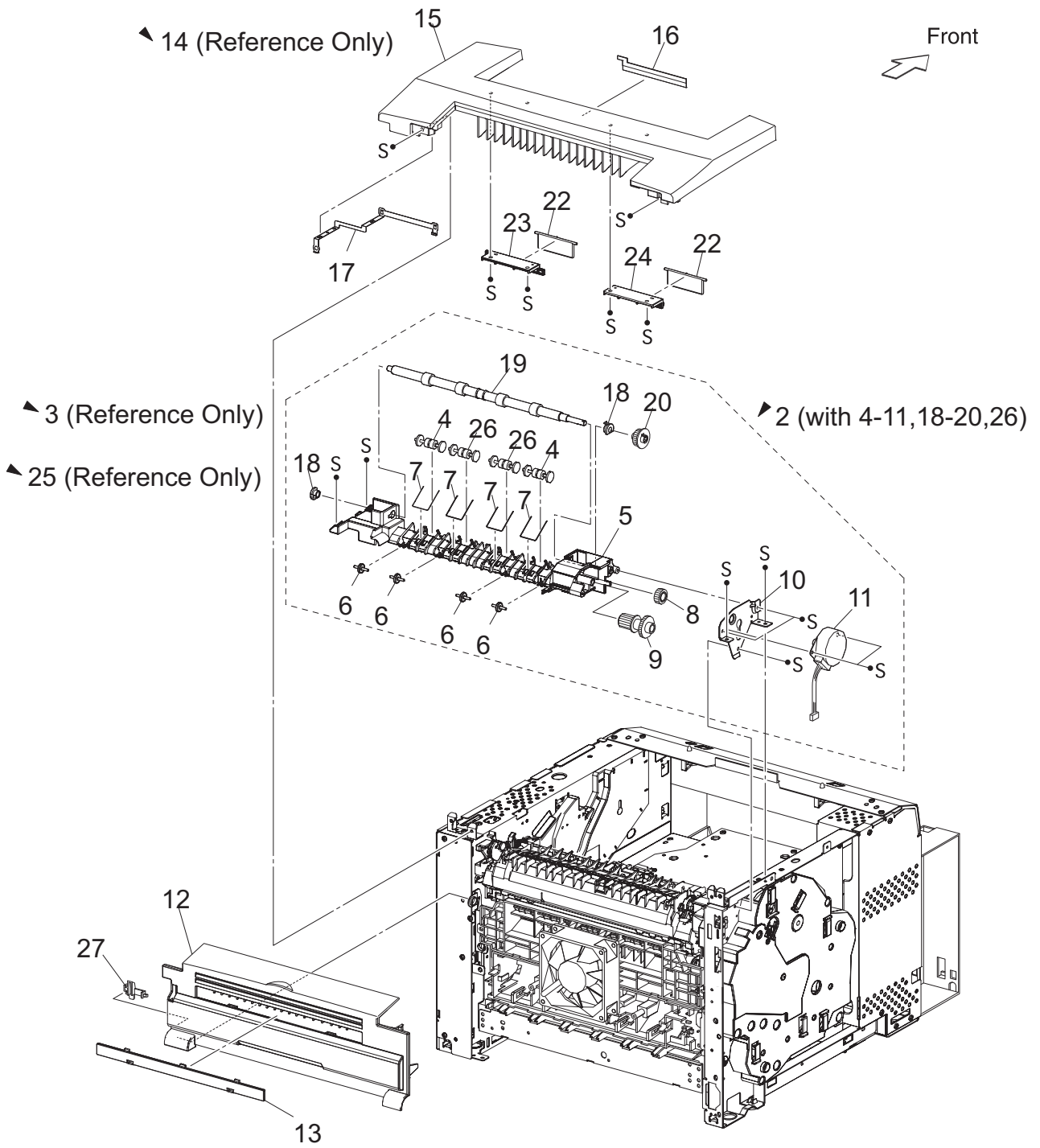
PL8.1 Xero [Illustration]



PL9.1 250 Paper Exit

Number	Part Number	Name
2	054K23667	Chute LW Ext 2 Assy, B6200
4	059E01530	ROLL PINCH EXIT, [B62/63]
7	809E14740	SPRING PINCH EXIT, [B62/63]
9	007E77071	GEAR 16/49, [B62/63]
11	127K36931	MOTOR ASSY EXIT (J103), [B62/63]
18	013E23341	BEARING EXIT, [B62/63]
20	007E77080	GEAR 21, [B62/63]

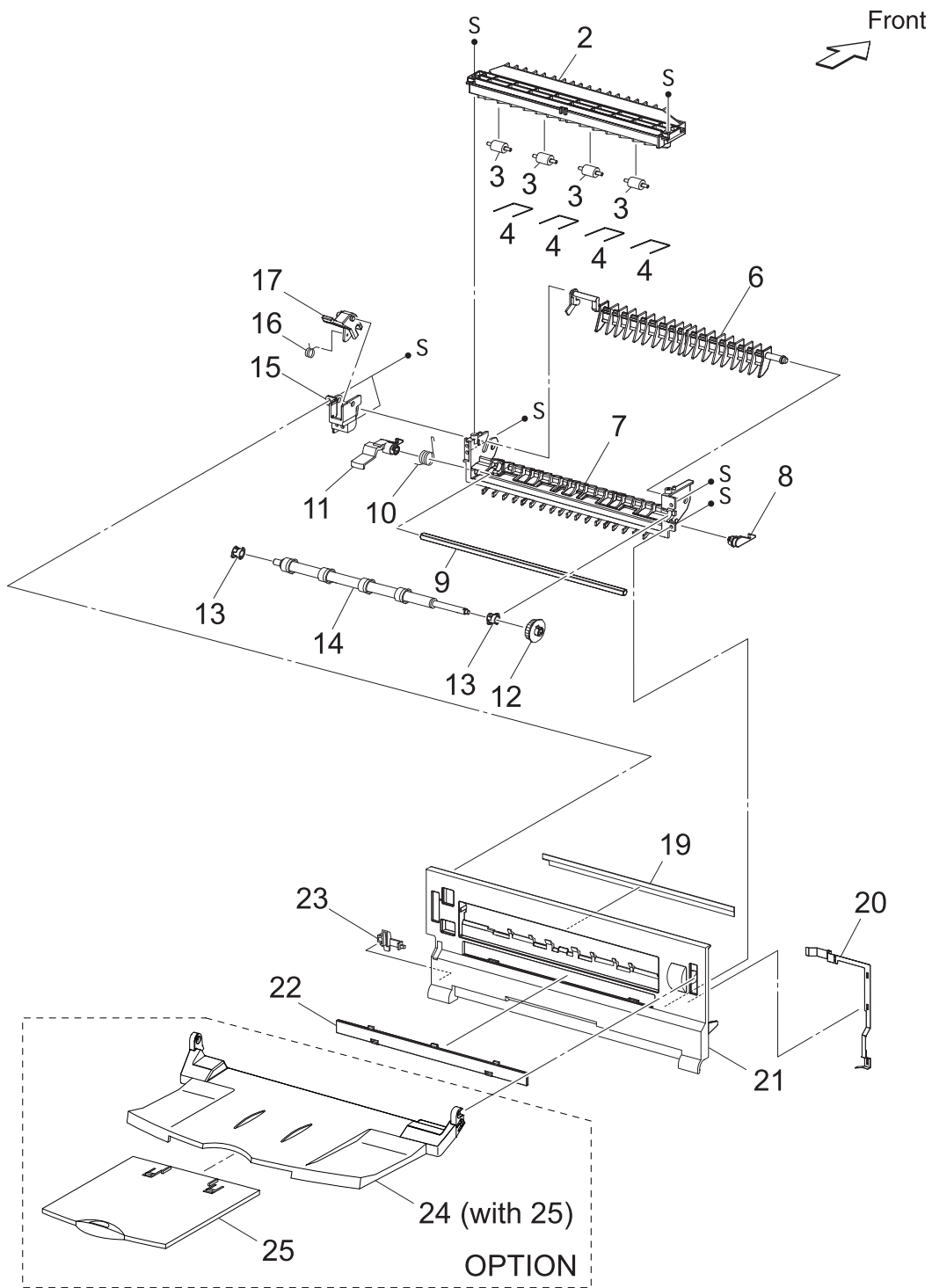
PL9.1 250 Paper Exit [Illustration]



PL10.1 500 Paper Exit

Number	Part Number	Name
1	604K16583	Cover Exit 500, B6200
2	084K15664	Exit Assembly, B6300
7	012E10801	LINK GATE OCT, [B62/63]
10	120K92120	ACTUATOR FULL STACK, [B62/63]
12	059K24974	ROLL EXIT, [B62/63]
18	007E77101	GEAR 25-2, [B62/63]
19	007E77091	GEAR 25-1, [B62/63]
24	809E40100	SPRING GATE OCT, [B62/63]
28	059E97930	ROLLER EXIT 500, [B62/63]

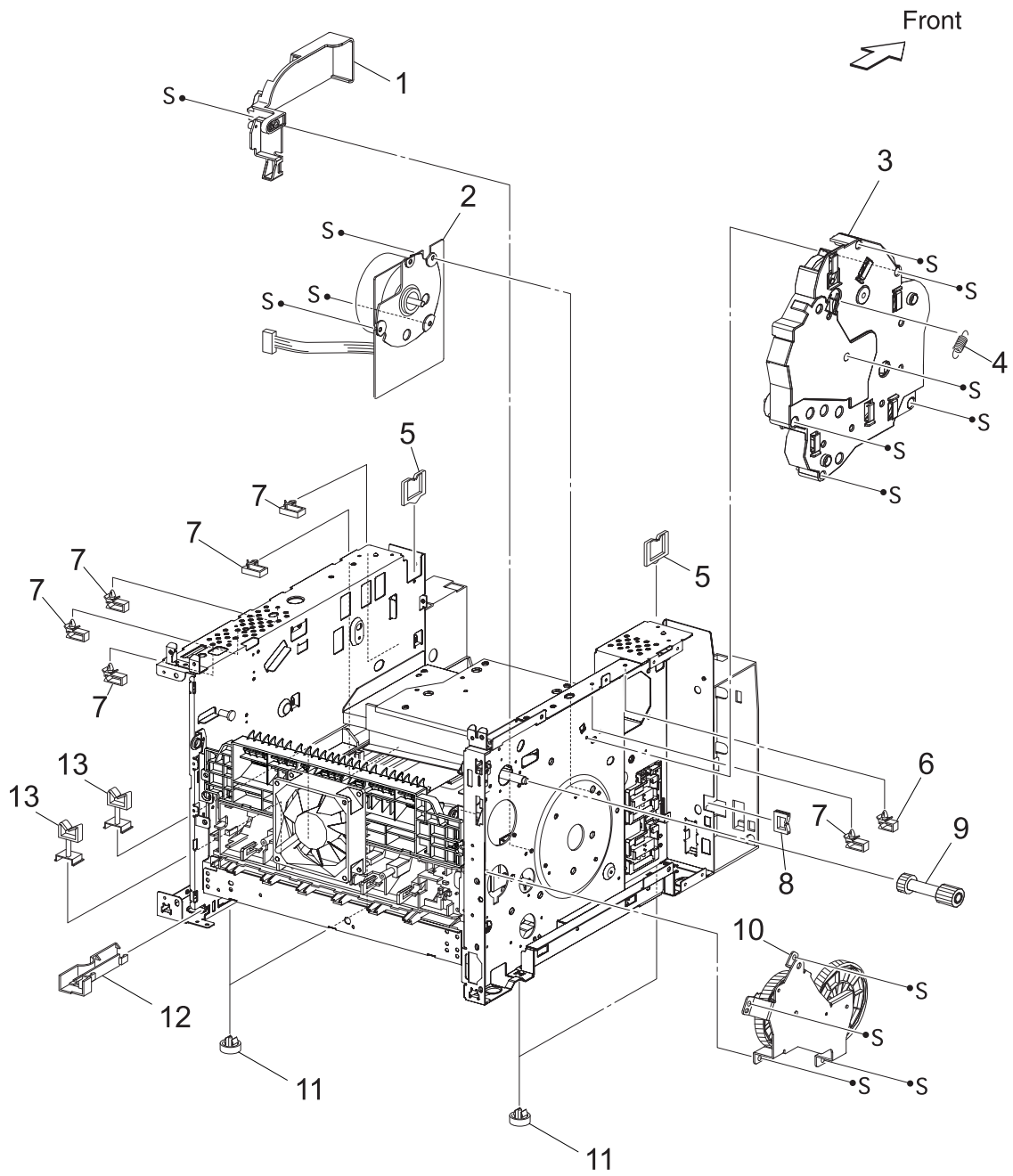
PL10.2 500 Paper Exit (2/2) & Option Face Up Tray [Illustration]



PL11.1 Frame & Drive

Number	Part Number	Name
2	127K36816	MAIN MOTOR (J43) 24PPM, [B62/63]
2	127K36825	MAIN MOTOR (J43) 34PPM, [B62/63]
3	007K88941	GEAR ASSY HOUSING 24PPM, [B62/63]
3	604K16670	GEAR ASSY HOUSING 34PPM, [B62/63]
4	809E37302	SPRING RELEASE, [B62/63]
9	807E02560	GEAR 9, [B62/63]
10	007K87753	GEAR ASSY PLATE 34PPM, [B62/63]
10	007K89040	GEAR ASSY PLATE 24PPM, [B62/63]

PL11.1 Frame & Drive [Illustration]



PL12.1 Electrical

Number	Part Number	Name
4	160K91992	PWBA EXIT MOTOR, [B62/63]
7	110K11624	INTERLOCK S/W REAR (J44), [B62
10	127E83610	FAN MAIN (J244), [B62/63]
11	101E16632	PANEL REAR, [B62/63]
13	960K28743	PWBA ESS 24PPM 220V, [B6200]
13	960K40191	PWBA ESS 34PPM 220V, [B6300]
16	962K13460	FFC ASSY ESS (P28-CNVD), [B62/63]
17	962K14194	HARNESS ASSY CHUTE, [B62/63]
19	675K24242	HVPS/MCU 34PPM 1200DPI 220V, B6300
19	675K24252	HVPS/MCU 24PPM 1200DPI 220V, [B62]
21	962K08162	HARNESS ASSY FDR1 (J20-P2083), B62/63/65
26	962K19901	HARNESS ASSY OCT 1, [B62/63]
28	962K14292	HARNESS ASSY TONER 2, [B62/63]
98	604K11192	KIT ROLL ASSY RETARD (3pcs), [B62/63]

PL12.1 Electrical [Illustration]

